



CAVIBLASTER[®]
Model 1325-D

STANDARD FEATURES

- Commercial/Industrial grade Kohler Diesel Engine – Liquid cooled
- Electric start with AGM battery & marine battery box
- Ignition switch w/key start and throttle cable assembly
- Emergency electrical shutoff switch
- Low coolant & low oil engine shutdown
- Udor CKC 50 / 15S Pressure Pump
- Gear driven pressure pump
- Engine oil & pressure pump oil drains offer easy maintenance
- Built-in fuel tank
- Powder coat welded aluminum frame
- Johnson L2200 12V feed pump & hose assembly (15 ft/4.5 m)
- Marine grade push/pull feed pump switch & weather tight connector plug
- Cleanable 50 mesh stainless steel screen inlet strainer
- Adjustable pressure regulator/unloader
- Secondary relief valve
- Pulsation dampener
- Bypass hose assembly - 1" dia (15 ft/4.5 m)
- Pressure hose assembly w/quick connects - 1/2" dia (50 ft/15 m) – 4000 psi
- Choice of Zero/Thrust diver gun or ROV Lance for output

TOOLS OPTIONS

- **CaviBlaster Zero-Thrust Gun**

Ergonomically balanced underwater tool, perfect for cleaning all surfaces, either complex geometry or flat, and in tight areas. Generates 2,500psi at 13gpm of water flow.



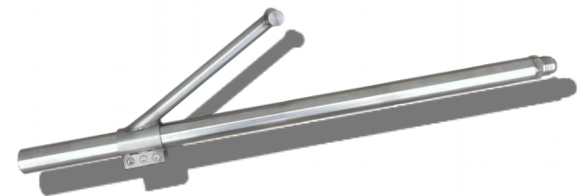
- **Balanced CaviBlaster Lance for an ROV**

This tool is easily mounted onto an observation class ROV, such as VideoRay. Such an ROV, coupled with a CaviBlaster balanced lance, make this integration a very capable inspection tool.



- **Unbalanced CaviBlaster Lance for a Work Class ROV**

This lance generates 2,500psi at 13gpm of water flow and 132N / 13.5kg of back thrust. Capable of cleaning significant calcified fouling at a depth of up to 75 meters / 250 feet.



- **CaviDome**

The CaviDome cleans up to 16 inch / 40 cm swath in a single pass for flatter surfaces. It incorporates negative pressure in order to adhere to the surface when operating. Two rotating nozzles generate 2,500psi at 13gpm of water flow.

