

# 2100 Series Pumps and Motors

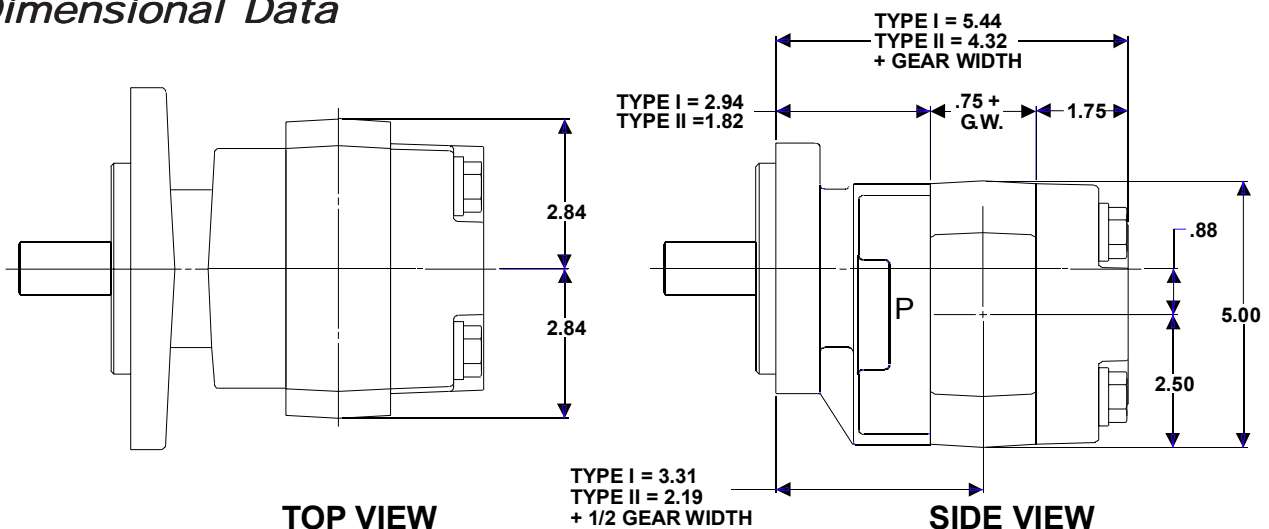


A SERIES FOR APPLICATIONS WHERE SPACE IS AT A PREMIUM

Permco is proud to introduce the P2100 series. This series is built upon the proven P3000 series gear pump. Its rugged dowelled, three-piece cast iron, roller bearing design provides long lasting service even in the roughest applications.

- Mounting configurations available:
  - Four Bolt B Type I
  - Two Bolt B Type I
  - Two Bolt A Type I
  - Two Bolt B Type II
  - Two/Four Bolt B Type I
  - Chelsea Coverleaf
  - 6 Bolt Round
- Flows to 39 GPM
- Pressures to 3000 PSI
- NPT and JIC Porting
- All Dowelled Construction
- Shafts:
  - 13 tooth 7/8" B spline
  - 7/8" Keyed
  - Continental Shafts Available
- Pressure balanced thrust plates maintain high pump efficiency throughout all operating ranges.
- Low weight: 34.5 pounds with a 2" gear, Type II
- Size: Minimum Size per Displacement

## Dimensional Data

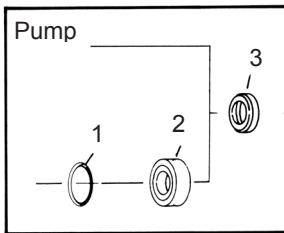


1500 Frost Road  
Streetsboro, OH 44241

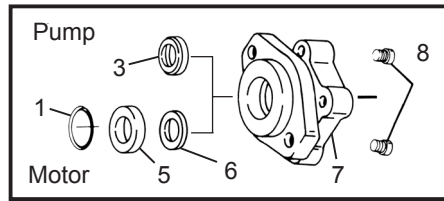
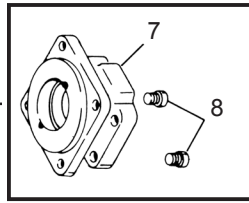
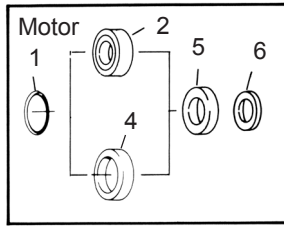
Phone (330) 626-2801  
Fax (330) 626-2805

## 2100 SERIES PUMPS/MOTORS

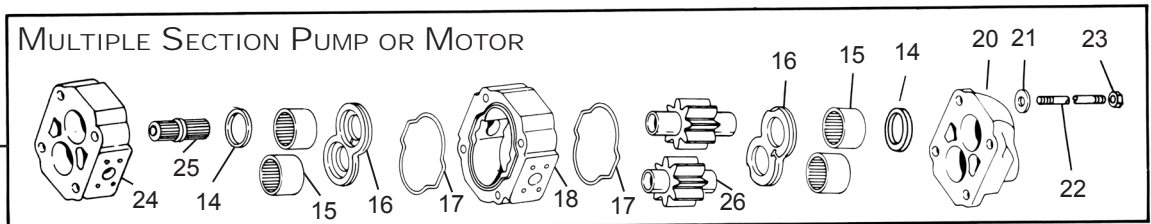
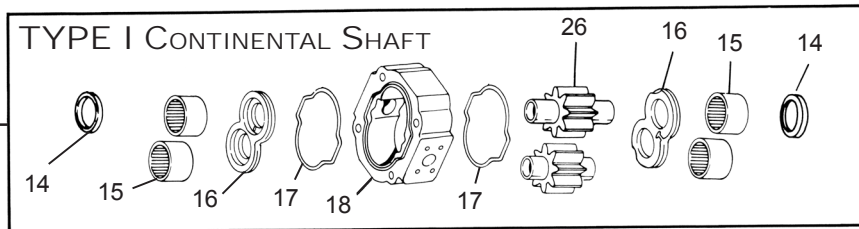
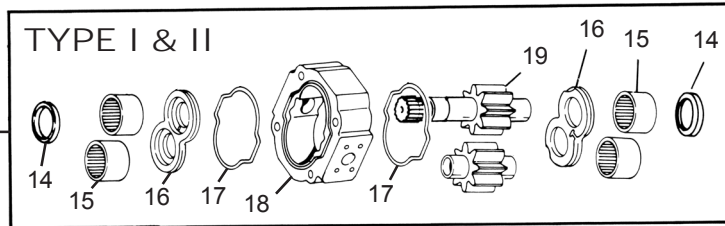
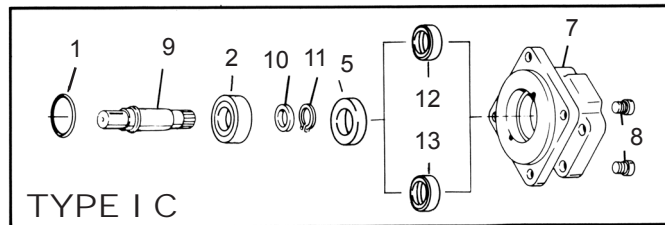
- 1 Spiral Lock Retaining Ring
- 2 Outboard Bearing
- 3 Integral Pump Shaft Seal
- 4 Bearing Spacer
- 5 Seal Retainer
- 6 Integral Motor Shaft Seal
- 7 Shaft End Cover (SEC)
- 8 Check Valve Assembly or Plug
- 9 Continental Shaft
- 10 Spacer
- 11 Snap Ring
- 12 Continental Pump Shaft Seal
- 13 Continental Motor Shaft Seal
- 14 Ring Seal
- 15 Controlled Stress Roller Bearing
- 16 Thrust Plate
- 17 Gasket Seal
- 18 Housing
- 19 Drive Shaft & Gear Set
- 20 Port End Cover
- 21 9/16-12 Grade 8 Washers
- 22 9/16-12 Grade 8 Threaded Rod
- 23 9/16-12 Grade 8 Hex Nut
- 24 Bearing Carrier
- 25 Connecting Shaft
- 26 Gear Set
- 27 9/16-12 Grade 8 Cap Screw



TYPE I



TYPE II



1500 Frost Road  
Streetsboro, OH 44241

Phone (330) 626-2801  
Fax (330) 626-2805